

FORESTRY MONITORING SERVICE

SAME DAY IMAGERY. NO EXPENSIVE TASKING. ALWAYS ON.

Planet and NGIS have established a disruptive monitoring service specifically designed for forestry that can cater for discrete areas of interest spread across entire countries.

The Forestry Monitoring Service provides access to Planet's imagery archive to monitor daily change at a level not readily accessible before.

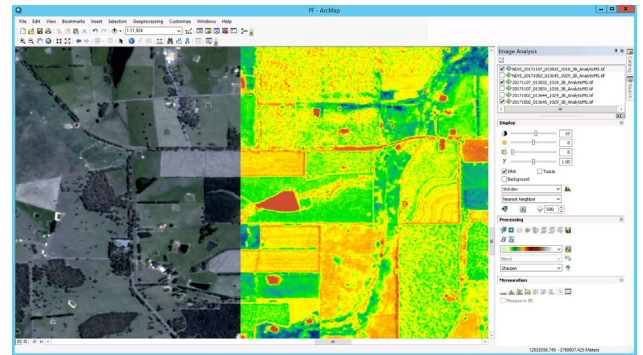
There are no minimum order areas and no restriction on monitoring dates. A fixed price annual subscription will provide access to a country full of daily satellite imagery with the flexibility to download data where and when it is required.

The details:

- PlanetScope 3m Imagery with RGB and Near Infrared bands
- Country specific monitoring, no limit to area
- Imagery accessed online through the Planet Platform
- Data can be downloaded from any date for any area*

The uses:

- Flexible **harvest** monitoring and reporting
- Monitor the **health** of your forests
- Analyse the impact of damage **events** when they happen
- Optimise **acquisition** analysis
- Improve **operational** awareness across all activities

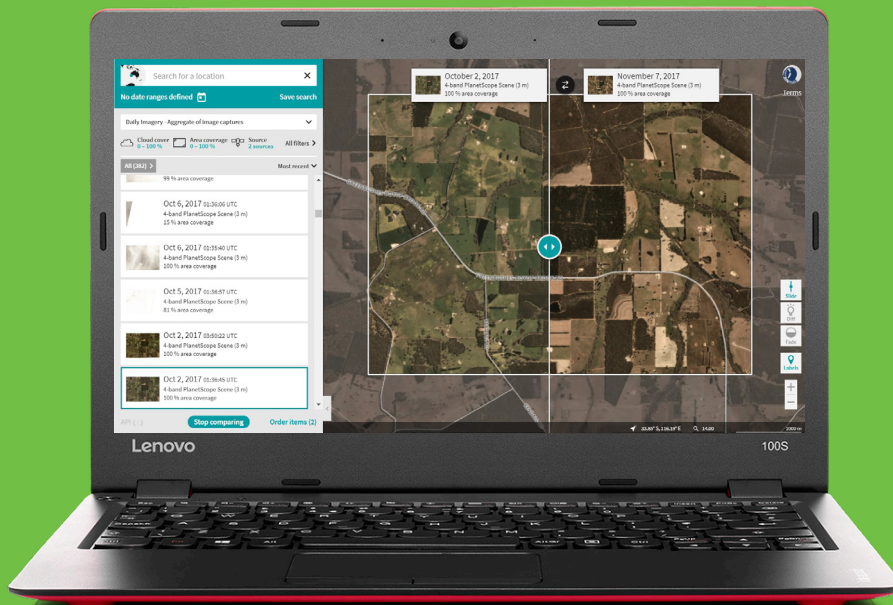


The full picture

Daily imagery across all of your operations and areas of interest.

Analytics for business

Access to a world class imagery collection to provide unique business insights.



New age of satellite imagery

Planet is designing, building and launching satellites faster than any company or government in history.

Simple access

Easily view day to day change and compare imagery from different dates.

THE ENTIRE EARTH, EVERY DAY

Planet collects and delivers information faster than anyone else, so you can see what's happening on the ground in near-real time.

<https://www.planet.com/products/monitoring/>

